

T7N

R5E



Office of the Monroe County Surveyor
Trohn Enright-Randolph

Health Services Building
119 West 7th Street
Bloomington, IN 47404
Phone: (812) 349-2570

Dear User,

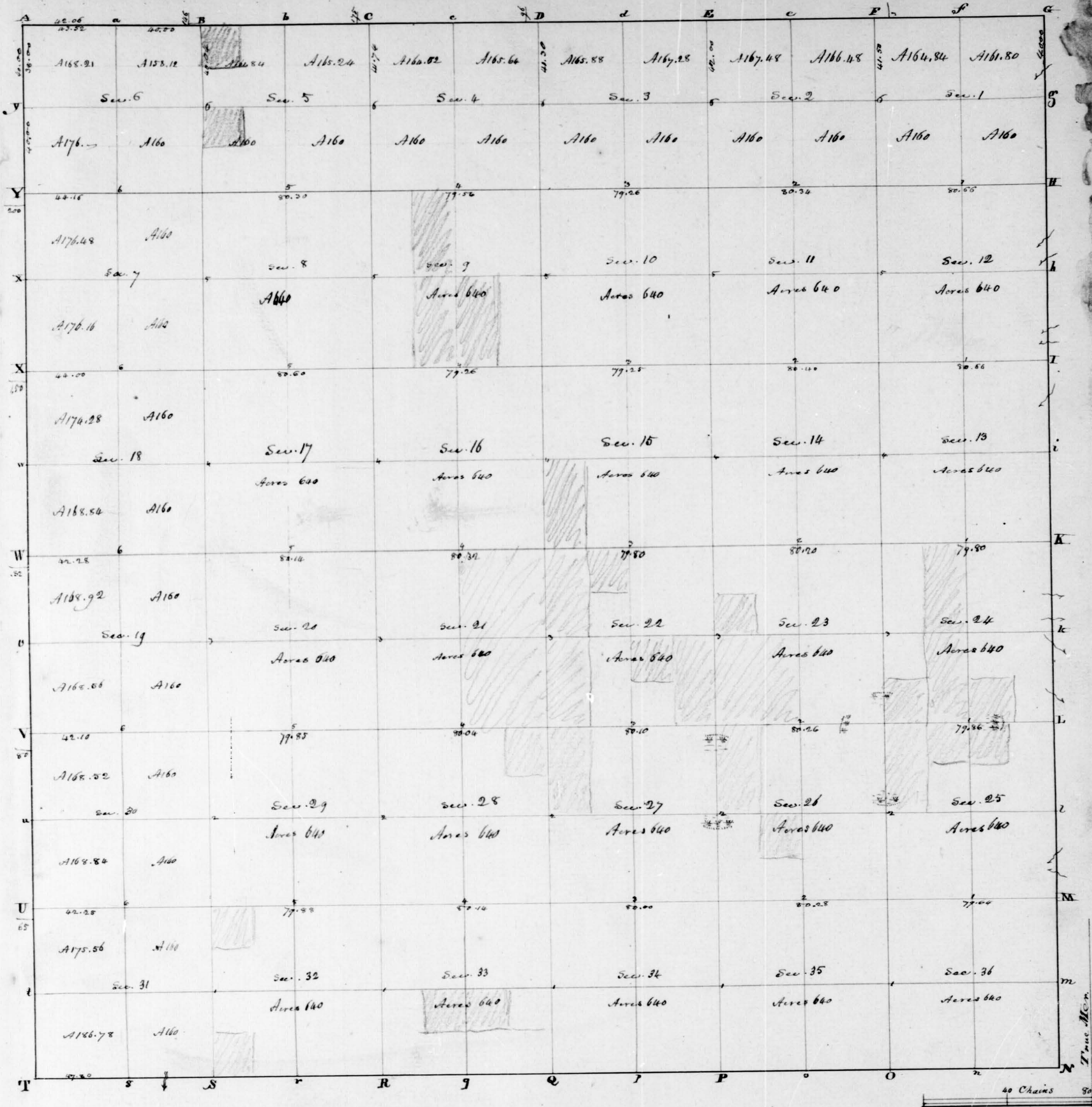
The following images were obtained in 2017 by the Office of the Monroe County Surveyor from the State Imaging and Microfilm Laboratory at the Indiana State Archives. The field notes and plats for Jackson County are stored on microfilm Reel 7545 at the Indiana State Archives. Each page provided by the State Imaging and Microfilm Laboratory is approximately 18MB. Our office combined the pages by Township & Range and reduced the resulting pdfs. This process may have caused some degradation in quality. We will provide unreduced images of specific pages if required. Please contact us at 812-349-2570 or at SurveyorsOffice@co.monroe.in.us to request a higher quality image of any specific page.

The pdfs are bookmarked with the original page numbers as assigned by the State Imaging and Microfilm Laboratory.

Be prepared to provide the county name, reel number, and the required page numbers when requesting full sized images.

If you would like a DVD of an entire county, please provide us with one DVD per county along with a self-addressed, stamped envelope.

Trohn Enright-Randolph
Monroe County Surveyor



Township N.º VII North, Range N.º V East 2.º Mer. Surveyed by B.F. Morris..... 1819.

Description of the Soil on the interior Sectional lines.

Between Sections	Quality &c.	Between Sections	Quality &c.	Between Sections	Quality &c.
35 & 36	Land rolling 1 st & 2 nd rates. Beech Sugar. Oak. Maple	27.3	Land rolling 3 rd & 4 th rates. Beech. Oak. Poplar. Hickory &c.	4 & 9	Land Level & Swampy
28. 36	Swampy & 1 st & 2 nd rates. Beech. Oak. Poplar. Sugar. Spruce &c.	32. 34	Same, Hilly	4. 5	Rolling 2 nd & 3 rd rates Beech & Oak
28. 36	First 2 miles level Beech lands - last 4 miles Swampy	27. 34	Same, Rolling	31. 32	Land Level & Wet 2 nd & 3 rd rates Beech. Oak. Hickory. Gum
24. 25	Swampy & 1 st & 2 nd rates	27. 28	Level 2 nd & 3 rd rates. Timber Same	29. 32	Same
23. 24	Land rolling 2 nd & 3 rd rates. Beech. Oak. Poplar. Sugar. Maple &c.	22. 27	Flat Wet. Beech. Maple. Gum &c.	30. 31	Level W. Oak & Level 3 rd & 4 th rates
13. 24	Part rolling. part & Swampy & 2 nd rates	21. 22	Same	29. 31	Same
13. 12	Rolling 2 nd & 3 rd rates	15. 22	Same	20. 29	Rolling 2 nd & 3 rd rates. Timber Same
12. 13	Level Swampy Lands	15. 16	Same	19. 30	Level Swampy lands
11. 12	Level & Wet	10. 15	Level Beech lands 2 nd & 3 rd rates	19. 20	Land Hilly 2 nd & 3 rd rates
1. 12	Same. 2 nd & 3 rd rates	9. 10	Rolling 2 nd & 3 rd rates. Beech. Oak. Poplar. Maple &c.	17. 20	Same
1. 2	Hilly 3 rd & 4 th rates lands	3. 10	Same	18. 19	Same
34. 35	Level 2 nd & 3 rd rates. Beech. Oak. Maple. Oak &c.	3. 10	Same	17. 18	Same
26. 35	Rolling Same	32. 33	Part level. part & rolling 2 nd & 3 rd rates. Timber Same	18. 17	Rolling 3 rd & 4 th rates
26. 27	Level & Wet	28. 33	Rolling, Same	4. 18	Land Hilly
23. 26	Rolling 3 rd & 4 th rates. Timber Same	28. 29	Same. Beech lands 2 nd & 3 rd rates	6. 8	Same
22. 23	Level & Wet	21. 23	Part level & Part Rolling	5. 8	Same
14. 23	Same 2 nd & 3 rd rates	20. 21	Rolling 2 nd & 3 rd rates	6. 7	Same
14. 15	Rolling 2 nd & 3 rd rates. Timber Same	15. 21	Level 2 nd & 3 rd rates	5. 6	Same
11. 14	Same. Beech & Level 3 rd & 4 th rates	16. 17	Same 2 nd & 3 rd rates		
10. 11	Rolling 2 nd & 3 rd rates	9. 16	Level 2 nd & 3 rd rates		
9. 11	Same	8. 9	Same 2 nd & 3 rd rates		

Township N. 7 North, Range N. 5 East 2^d Mer.

Range line	Var.	E.	North	On the East Side of Sec. 13
North Between Ranges 5 & 6 E. Township 7 North			4.09	A. Poplar 36 in. diam.
On the East Side of Sec. 36			40.00	gr. Sec. corner Beech 10 S 20 E 35 do 12 S 19 W 16
16.49 A. Elm 36 in. diam.			50.50	A. Beech 20 in. diam.
40.00 gr. Sec. corner	Ashberry 6 S 29 E 20		67.75	A. Branch 4 lbs S.W.
	do 5 S 33 W 26		80.00	Set post corner to Sec. 12 S 12
80.00 Set post corner of Sec. 25 S 36				Beech 12 S 17 S 115
	Beech 15 S 34 W			Ash 18 S 35 E 21
	do 10 S 34 W			
Land level Rich. Sugar. Beech. Ash. Nut. Spruce. Birch.				
North On the East Side of Sec. 25			North	On the East Side of Sec. 12
8.00 A. run 3 lbs S.W.			7.00	A. Branch 4 lbs West
20.50 A. Branch 6 lbs S.W.			15.00	A. Branch 4 lbs S.W.
40.00 gr. Sec. corner	Beech 10 S 28 W 6		27.20	A. Hickory 18 in. diam.
	do 10 S 29 E 5		40.00	gr. Sec. corner Hickory 20 S 20 E 7
49.25 A. Beech 24 in. diam.				Beech 30 S 15 S 118
60.35 A. Beech 15 in. diam.			46.58	A. Branch 4 lbs S.W.
80.00 Set post corner to Sec. 24 S 25			48.25	A. Beech 24 in. diam.
	B. Ash 18 S 30 E 4		58.00	A. Branch 5 lbs S.W.
	do 18 S 42 W 25		80.00	Set post corner to Sec. 1 S 12
Land level good 2 ^d water. Beech. Ash. Nut. Spruce.				
	Aug. 8 th 1819			Beech 18 S 4 E 24
	May 30 th 1819			do 10 S 46 E 11
North On the East Side of Sec. 24			North	On the East Side of Sec. 1
10.50 A. Branch 6 lbs East			40.00	gr. Sec. corner Beech 24 S 19 W 25
35.50 A. Branch 3 lbs East				Yum 8 S 9 W 18
40.00 gr. Sec. corner	Beech 18 S 32 W 59		57.50	A. Branch 2 lbs S.W.
	No more trees noted		80.00	Set post corner of Sec. 1 S 31. 35
45.00 A. Branch 3 lbs East				North Range 50 th East
54.00 A. Branch 3 lbs East				Beech 20 S 19 W 18
80.00 Set post corner to Sec. 13 S 24				Ash 20 S 11 W 17
	Beech 10 S 41 E 5			
	do 6 S 41 W 4			
Land level 2 ^d water. Beech. Poplar. Ash. Nut. Spruce. Oak. Ash. Salubras V.				

Township line on Random		80.00	Set post corner of Sec. 35 S 36
East Between Township 6 & 7 N. Sec. 1. 6 S 1 Range 5 East			Sugar 10 S 31 W 16
40.00 Temporary gr. Sec. post			Walnut 20 S 31 E 8
58.09 A. Beech 75 lbs South		West	On the South Side of Sec. 35. Pine line
80.00 Set temporary post of Sec. corner of 31 S 32		21.84	A. Beech 15 in. diam.
Soil Wet land. rich. Beech. Gum. Elm V.		40.00	gr. Sec. corner Beech 8 S 20 W 4
East Random line Continued			Sugar 12 S 60 W 12
40.00 Temporary gr. Sec. post		62.00	A. Poplar 10 in. diam.
80.00 Set temporary post of Sec. 32 S 33		80.00	Set post corner to Sec. 34 S 35
Land Timber as before			Sugar 15 S 42 W 8
East Random line. continued			do 14 S 46 E 37
40.00 Temporary gr. Sec. post		West	On the South Side of Sec. 34. Pine line
80.00 Set temporary post to Sec. 33 S 34		40.00	gr. Sec. corner Ironwood 10 S 45 W 16
Land level Rich. Sugar. Poplar. Nut. Spruce			Hickory 24 S 47 E 7
East Random line. continued		65.81	A. Beech 18 in. diam.
40.00 gr. Sec. post Temporary		80.00	Set post corner to Sec. 33 S 34
80.00 Set post temporary to Sec. 34 S 35			Beech 12 S 43 E 36
This mile good as before			do 10 S 88 W 42
East Random line. continued		West	On the South Side of Sec. 33. Pine line
40.00 Temporary gr. Sec. post		32.71	A. M. Oak 18 in. diam.
80.00 Set temporary post of Sec. 35 S 36		40.00	gr. Sec. corner Beech 20 S 85 E 28
Land Timber as before			do 13 S 71 W 19
East Random line continued		50.70	A. Beech 36 in. diam.
40.00 Temporary gr. Sec. post		80.00	Set post corner to Sec. 32 S 33
87.80 Intersected Range line, Between Ranges			Beech 20 S 40 E 24
50 th Town. 6 S 7. Sec. 1. 6. 31. 36			do 20 S 17 W 19
Soil rich land. Beech. Sugar. Walnut V.		West	On the South Side of Sec. 32
May 28 th 1819		40.00	gr. Sec. corner Hickory 15 S 48 W 14
Township line - Var. 7. 15			do 13 S 41 E 26
West Between Township 6 & 7 North, Range 5 East		42.53	A. Hickory 24 in. diam.
on the South Side of Sec. 36 On Pine line		80.00	Set post corner of Sec. 31 S 32
17.08 A. Hickory 30 in. diam.			Beech 18 S 35 W 14
40.00 gr. Sec. corner Beech 18 S 44 W 4			Gum 24 S 83 W 20
do 10 S 66 E 19		West	On the South Side of Sec. 31
68.11 A. Beech 18 in. diam.		40.00	gr. Sec. corner Beech 8 S 47 W 4
			Maple 12 S 45 E 28

87.80 Intersected the Range line, Between Ranges 118 & 119
 Townships 60th North, Sec. 1, 6, 31, 36
 May 30th 1819
 Surveyed by John. M^o. Donald L. S.
 Subdivisions of Township 60th North, Range 5 East
 North Between Sec. 35 & 36 Sec. 7. 10
 40.00 gr. Sec. corner Beech 10 S 26 N 5
 do 15 N 37 E 32
 62.13 H. Oak 30 in. diam.
 80.00 Set post corner to Sec. 25, 26, 35, 36
 Beech 15 S 26 N 12
 do 6 North 21
 First 1/2 Mile Rolling, last 1/2 level 2nd water, Beech,
 Sugar, Oak, Maple & 1st water
 East Between Sec. 36 & 35 On Random
 40.00 Temporary gr. Sec. post
 79.64 Intersected East Boundary 1.52 1/2 miles South of post
 Sand level 2nd water, Beech, Oak, Sugar, Maple, 1st water
 West Corrected
 39.82 gr. Sec. corner Beech 15 S 82 E 25
 Maple 18 S 56 N 25
 79.64 Section corner
 North Between Sec. 25 & 26
 32.20 H. Beech 18 in. diam.
 40.00 gr. Sec. corner Beech 18 N 2 E 26
 do 18 N 56 E 26
 42.00 Entered H. Swamp
 80.00 Corner in Swamp, no bearing trees
 First 1/2 Mile level, Beech land, last 1/2 Mile Swamp
 East Between Sec. 24 & 25 On Random
 40.00 Temporary gr. Sec. post
 52.00 Set Swamp
 79.86 Intersected East Boundary 1.00 1/2 miles South of post
 Swamp by 1st water

West Corrected Between Sec. 24 & 25
 39.86 gr. Sec. corner Sugar 18 N 12 E 15
 do 15 S 36 E 21
 79.86 Section corner
 North Between Sec. 23 & 24
 15.00 Set Swamp
 31.10 H. Sugar 18 in. diam.
 40.00 gr. Sec. corner Beech 16 N 26 E 3
 do 20 N 26 N 14
 55.76 H. Sugar 12 in. diam.
 80.00 Set post corner to Sec. 23 & 24
 Beech 8 N 50 N 16
 do 20 East 18
 Sand level 2nd water, Beech, Oak, Sugar,
 Maple & 1st water, Dogwood &
 East Between Sec. 13 & 24 On Random
 40.00 Temporary gr. Sec. post
 79.80 Intersected East Boundary 1.25 1/2 miles S. of post
 First 1/2 Mile Rolling, last 1/2 Mile Swamp by 2nd water
 Beech, Oak, H. Maple, 1st water, Beech
 West Corrected
 39.70 gr. Sec. corner Ash 15 S 28 N 5
 Beech 10 S 25 E 6
 79.80 Section corner Sept. 1st 1819
 North Between Sec. 13 & 14
 33.12 H. Beech 12 in. diam.
 40.00 gr. Sec. corner Sugar 8 N 33 N 8
 Beech 5 N 41 E 10
 53.28 H. Gum 36 in. diam.
 80.00 Set post corner to Sec. 11, 12, 13, 14
 Beech 10 N 65 E 20
 Sugar 8 N 38 N 17
 Sand level 2nd water, Beech, Sugar, Oak, 1st water
 East Between Sec. 12 & 13 On Random
 40.00 Temporary gr. Sec. post
 80.66 Intersected East Boundary 1.25 1/2 miles S. of post
 Sand Swamp, Beech, Maple &

West Corrected Between Sec. 12 & 13
 40.33 gr. Sec. corner Hickory 6 S 50 E 14
 do 15 N 78 N 10
 80.66 Section corner
 North Between Sec. 11 & 12
 29.00 H. Maple 12 in. diam.
 40.00 gr. Sec. corner Beech 20 N 78 E 14
 do 22 N 75 N 15
 59.22 H. W. Elm 15 in. diam.
 80.00 Set post corner to Sec. 1, 2, 11, 12
 Beech 20 S 33 E 12
 do 22 S 55 N 6
 Sand level 2nd water, Beech, Maple, Beech, Oak &
 East Between Sec. 1 & 12 On Random
 40.00 gr. Sec. post Temporary
 80.66 Intersected East Boundary 1.05 1/2 miles South of post
 Sand level 2nd water, Beech, Oak, Sugar, Maple, 1st water
 West Corrected
 40.33 gr. Sec. corner Beech 6 S 46 N 14
 do 6 N 39 E 23
 80.66 Section corner
 North Between Sec. 1 & 2
 23.10 H. Beech 10 in. diam.
 40.00 gr. Sec. corner Beech 8 N 50 N 16
 do 6 N 73 E 7
 59.72 H. Beech 8 in. diam.
 81.50 Intersected North Boundary 3 1/2 miles West of post
 No post Set, Sand level 2nd water, Beech,
 Oak, 1st water, Beech, Sugar &
 North Between Sec. 34 & 35
 19.41 H. Beech 18 in. diam.
 40.00 gr. Sec. corner N. Oak 8 N 86 N 16
 do 12 N 50 N 14
 64.50 H. Beech 12 in. diam.

80.00 Set post corner to Sec. 26, 27, 34, 35
 N. Oak 30 N 80 E 18
 do 40 N 25 N 26
 Sand level 2nd water, Beech, Sugar, Oak, Gum, 1st water
 East Between Sec. 26 & 35 On Random
 40.00 Temporary gr. Sec. post
 80.28 Intersected East line 1.26 1/2 miles South of post
 Rolling 2nd water, Beech, Sugar, Oak, H. Maple, 1st water
 West Corrected
 40.14 gr. Sec. corner Beech 18 N 42 N 10
 do 3 S 7 N 21
 80.28 Section corner Sept. 2nd 1819
 North Between Sec. 26 & 27
 35.00 Entered H. Swamp
 40.00 gr. Sec. corner Willow 8 N 75 E 11
 do 7 N 73 E 11
 76.00 Set Swamp
 80.00 Set post corner to Sec. 22, 23, 26, 27
 Beech 10 N 49 E 9
 N. Oak 44 N 75 N 19
 Level 2nd water, Beech, Oak, H. Hickory, Willow, 1st water
 East Between Sec. 23 & 26 On Random
 40.00 Temporary gr. Sec. post
 60.00 Entered H. Swamp
 80.26 Intersected East line 1.30 1/2 miles South of post
 Sand level 2nd water, Beech, Oak, Hickory, 1st water
 West Corrected
 40.13 gr. Sec. corner Beech 12 S 41 N 11
 do 20 N 64 E 20
 80.26 Section corner
 North Between Sec. 22 & 23
 31.00 H. W. Ash 18 in. diam.
 40.00 gr. Sec. corner Beech 6 S 22 E 11
 do 6 N 21 E 17
 64.00 H. Beech 20 in. diam.

80.10 Set post corner to Sec. 14, 15, 22, 23
Beech 8 167 E16
do 15 145 N33

Land level Met 3rd rate, Beech, Oak, Ash, Gum &c.

East Between Sec. 14 & 23 On Grandon

40.00 Temporary q^r. Sec. post

80.20 Intersected East line at the South of post
Land level 3rd rate, Beech &c.

West Corrected

40.10 q^r. Sec. corner Beech 15 140 E9
do 8 143 N21

80.20 Section corner

North Between Sec. 14 & 15

22.82 A. Poplar 36 in. diam.

40.00 q^r. Sec. corner Beech 15 128 N18
do 5 144 N14

55.10 A. Beech 20 in. diam.

80.00 Set post corner to Sec. 10, 11, 14, 15
Beech 4 114 N24
Poplar 4 117 E6

Land Rolling 2nd rate, Beech, Oak, Poplar, Gum, &c.

East Between Sec. 11 & 14 On Grandon

40.00 q^r. Sec. corner Temporary

80.40 Intersected East line 50 yds North of post
Rolling Beech land 3rd rate

West Corrected

40.00 q^r. Sec. corner Beech 10 140 E20
do 12 126 N15

80.40 Section corner

North Between Sec. 10 & 11

30.76 A. Sugar 15 in. diam.

40.00 q^r. Sec. corner N. Ash 18 132 N13
Sugar 10 112 N21

65.25 A. Hickory 15 in. diam.

80.00 Set post corner to Sec. 2, 3, 10, 11
Oak 30 120 E16
Hickory 12 179 N37

Land Rolling 2nd rate, Beech, Oak, Poplar,
Hickory, Sugar &c. Augth 1817

East Between Sec. 2 & 11 On Grandon

40.00 Temporary q^r. Sec. post

80.34 Intersected East line 1.14 m North of post
Land level, Beech, Oak, Ash, Hickory, Elm, Augth 1817

West Corrected

40.17 q^r. Sec. corner N. Elm 15 North 17
Beech 14 112 N15

80.34 Section corner

North Between Sec. 2 & 3

16.00 A. Hickory 16 in. diam.

40.00 q^r. Sec. corner Beech 10 155 N18
do 6 166 E37

41.14 A. Gum 15 in. diam.

82.00 Intersected North Boundary at the post
Rolling 3rd rate land Beech, Oak, Hickory, Augth
1817

North Between Sec. 33 & 34

18.95 A. Gum 20 in. diam.

40.00 q^r. Sec. corner Beech 10 149 E7
Sugar 6 114 N14

57.00 A. N. Oak 30 in. diam.

80.00 Set post corner to Sec. 27, 28, 33, 34
N. Oak 20 134 N8
do 18 144 E25

First 1/2 mile level, last 1/2 mile 3rd rate, Beech,
Oak, Gum, Maple, Augth 1817

East Between Sec. 27 & 33 On Grandon

40.00 Temporary q^r. Sec. post

80.00 Intersected East line 1.48 m South of post
Land Rolling 3rd rate, Beech, Oak, Ash, Gum,
Hickory, Gum &c.

West Corrected Between Sec. 27 & 34

40.00 q^r. Sec. corner Hickory 10 181 E42
do 8 152 E43

80.00 Section corner

North Between Between Sec. 27 & 28

27.80 A. Beech 18 in. diam.

40.00 q^r. Sec. corner N. Ash 14 171 N28
Oak 20 173 E39

49.50 A. Poplar 18 in. diam.

50.18 Set post corner to Sec. 21, 22, 27, 28
N. Elm 8 155 E33
Beech 8 169 N30

Land level 2nd rate, Beech, Oak, Poplar, Oak, Hickory, Augth 1817

East Between Sec. 22 & 27 On Grandon

40.00 Temporary q^r. Sec. post

80.10 Intersected East line 1.50 m South of post
Flat Not land, Beech, Maple, Gum &c.

West Corrected

40.05 q^r. Sec. corner Gum 10 165 E14
do 6 174 N28

80.10 Section corner

North Between Sec. 21 & 22

12.20 A. N. Oak 18 in. diam.

40.00 q^r. Sec. corner Beech 8 155 N13
Maple 12 143 E13

65.25 A. Beech 24 in. diam.

80.00 Set post corner to Sec. 15, 16, 21, 22
Beech 30 145 E7
do 6 136 N8

1817

Land Not land, Beech, Oak, Maple, Birch &c.

East Between Sec. 15 & 22 On Grandon

40.00 Temporary q^r. Sec. post

79.80 Intersected East line 1.58 m South of post
Level Swampy land, Beech, Maple, Oak,
Birch &c.

West Corrected Between Sec. 15 & 22

39.90 q^r. Sec. corner Beech 15 122 E5
do 16 133 N19

79.80 Section corner

North Between Sec. 15 & 16

27.83 A. N. Oak 30 in. diam.

40.00 q^r. Sec. corner Beech 8 136 N18
do 15 126 E19

50.10 A. Hickory 36 in. diam.

80.00 Set post corner to Sec. 9, 10, 15, 16
N. Ash 14 146 N26
Beech 8 135 N26

Land Not land, Beech, Oak, Ash, Hickory, Gum &c. Augth 1817

East Between Sec. 10 & 15 On Grandon

40.00 Temporary q^r. Sec. post

79.75 Intersected East line 1.12 m South of post
Level Beech land 3rd rate

West Corrected

39.87 q^r. Sec. corner Beech 10 142 N29
do 10 110 E4

79.75 Section corner

North Between Sec. 9 & 10

24.08 A. Beech 15 in. diam.

40.00 q^r. Sec. corner Beech 16 160 E37
do 18 181 N17

56.73 A. Poplar 40 in. diam.

80.10 Set post corner to Sec. 3, 4, 9, 10
Beech 15 119 N17
do 15 120 N27

Land Rolling 2nd rate, Beech, Oak, Poplar &c. Augth 1817

East Between Sec. 3 & 10 On Grandon

40.00 Temporary q^r. Sec. post

79.26 Intersected East line 67 yds South of post
Land Rolling 2nd rate, Beech, Oak, Poplar, Ash,
Augth 1817

West Corrected Between Sec: 3 & 10
 39.63 gr. Sec. corner Beech 15 corner tree
 No other trees noted

79.26 Section corner
 North Between Sec: 3 & 4
 28.13 St. M. Oak 20 in. diam.
 40.00 gr. Sec. corner Beech 30 S 45 W 26
 do 30 S 75 E 32

65.40 St. Beech 18 in. diam.
 81.30 Intersected North Boundary 96 lbs East of post
 St. M. Oak 18 in. diam.
 Beech 18 S 58 E 30
 Dogwood 6 S 10 E 5

Rolling 3rd rate Beech, Oak, Poplar, Ash, Sugar, & Dogwood
 North Between Sec: 3 & 33
 20.12 St. Beech 18 in. diam.
 40.00 gr. Sec. corner Poplar 50 East 1
 St. Oak 10 S 22 E 6

64.50 St. Oak, Oak 24 in. diam.
 80.00 Set post corner to Sec: 28, 29, 30, 33
 Beech 10 S 54 E 18
 do 24 S 50 W 30

Land lost same place as above. Timber same as the Oak
 East Between Sec: 28 & 33 On Dandens
 40.00 Temporary gr. Sec. post
 80.14 Intersected East line 1.84 lbs South of post
 Rolling 3rd rate Beech, Oak, Ash, Poplar, Sugar, & Dogwood
 West Corrected
 40.07 gr. Sec. corner Beech 10 S 31 W 30
 do 12 S 54 E 40

80.14 Section corner
 North Between Sec: 28 & 29
 26.50 St. Beech 12 in. diam.
 40.00 gr. Sec. corner Beech 15 S 43 E 6
 do 15 S 27 W 7

66.90 St. Beech 18 in. diam.

80.00 Set post corner to Sec: 20, 21, 28, 29
 No trees noted
 Rolling Beech land 3rd rate
 East Between Sec: 21 & 28 On Dandens
 40.00 Temporary gr. Sec. post
 80.04 Intersected East line 2.12 lbs South of post
 First 3rd level 2nd rate last 3rd level 3rd rate land
 Beech, Oak, Maple, Birch, Poplar, Sugar, & Dogwood
 West Corrected
 40.02 gr. Sec. corner Maple 8 S 29 W 8
 do 6 S 78 E 7

80.04 Section corner
 North Between Sec: 20 & 21
 26.83 St. Beech 12 in. diam.
 40.00 gr. Sec. corner Beech 6 S 78 E 14
 do 5 S 50 W 16

54.33 St. Gum 18 in. diam.
 81.10 Set post corner to Sec: 16, 17, 21, 22
 Beech 15 S 80 W 7
 do 12 S 59 E 4

Rolling 3rd rate Beech, Oak, Ash, Poplar, Dogwood &
 East Between Sec: 16 & 21 On Dandens
 40.00 Temporary gr. Sec. post
 80.32 Intersected East line 2.04 lbs South of post
 Same 3rd rate Beech, Oak, Ash, Poplar, Sugar, & Dogwood
 West Corrected
 40.16 gr. Sec. corner Poplar 6 S 61 E 21
 Beech 10 S 63 W 13

80.32 Section corner
 North Between Sec: 16 & 17
 20.11 St. Beech 15 in. diam.
 40.00 gr. Sec. corner Beech 6 S 44 E 4
 do 5 S 54 W 30

57.80 St. M. Oak 18 in. diam.

80.00 Set post corner to Sec: 8, 9, 16, 17
 Beech 15 S 44 W 5
 do 15 S 58 E 14

Rolling 3rd rate Beech, Oak, Ash, Sugar, & Dogwood
 East Between Sec: 9 & 16 On Dandens
 40.00 Temporary gr. Sec. post
 79.26 Intersected East line 3.05 lbs South of post
 Soil 3rd rate Beech, Oak, Poplar, Sugar, & Dogwood
 West Corrected
 39.63 gr. Sec. corner St. Oak 30 S 73 E 23
 do 18 S 86 E 21

79.26 Section corner Sept. 6th 1819
 North Between Sec: 8 & 9
 26.30 St. Beech 20 in. diam.
 40.00 gr. Sec. corner Beech 6 S 55 W 10
 do 15 S 39 E 25

59.00 St. Beech 16 in. diam.
 80.00 Set post corner to Sec: 4, 5, 8, 9
 St. Oak 20 S 15 W 16
 Gum 30 S 65 E 22

Soil 3rd rate Beech, Oak, Poplar, Ash, Sugar, & Dogwood
 East Between Sec: 4 & 9 On Dandens
 40.00 Temporary gr. Sec. post
 79.56 Intersected East line 2.06 lbs South of post
 Soil swampy land Beech, Oak, Oak, Maple &
 West Corrected
 39.78 gr. Sec. corner Sep. 12 S 32 W 16
 White Elm 12 S 63 E 13

79.56 Section corner
 North Between Sec: 4 & 5
 28.35 St. Beech 12 in. diam.
 40.00 gr. Sec. corner Beech 16 North 10
 do 12 S 50 E 5

63.20 St. M. Oak 15 in. diam.

81.74 Intersected North Boundary 1.75 lbs East of post
 Beech 15 S 55 W 29
 do 16 S 62 E 20

Rolling 3rd rate Beech land
 North Between Sec: 31 & 32
 26.00 St. Poplar 24 in. diam.
 40.00 gr. Sec. corner Beech 20 S 87 E 30
 do 24 S 59 W 26

54.20 St. Hickory 12 in. diam.
 80.00 Set post corner to Sec: 29, 30, 31, 32
 Beech 12 S 80 W 19
 Gum 15 S 38 E 20

Land lost 162 3rd rate Beech, Oak, Hickory, Gum &
 East Between Sec: 29 & 32 On Dandens
 40.00 Temporary gr. Sec. post
 79.88 Intersected East line 1.40 lbs South of post
 Soil same Beech, Oak, Gum, Maple &
 West Corrected
 39.94 gr. Sec. corner Gum 12 S 10 W 13
 St. Oak 10 S 25 E 9

79.88 Section corner Sept. 7th 1819
 West Between Sec: 30 & 31
 22.24 St. M. Oak 24 in. diam.
 40.00 gr. Sec. corner St. Elm 6 S 15 W 13
 do 4 S 18 E 2

70.50 St. M. Oak 15 in. diam.
 82.25 Intersected West Boundary 65 lbs North of post
 St. Oak 30 S 50 E 53
 do 24 S 31 W 20

Soil M. Oak land 3rd rate
 North Between Sec: 29 & 30
 18.00 St. Maple 18 in. diam.
 40.00 gr. Sec. corner Beech 12 S 74 E 14
 St. Elm 10 South 12

54.80 St. Beech 10 in. diam.

80.00 Set post corner to Sec. 19, 20, 29, 30
 B. Walnut 15 N 50 E 17
 Beech 8 North 3
 Sand Hill 3rd rate. Beech. Oak. Elm. Aug. 1st. Degwood. Ironwood 1st.
 East Between Sec. 19 & 20 On Random
 40.00 Temporary g^r. Sec. post
 79.85 Intersected East line 1.14 lts South of post
 Rolling 2nd rate. Beech. Oak. Poplar. Gum. Sugar. Aug. 1st. Spruce. Degwood 1st.
 West Corrected
 39.92 g^r. Sec. corner Beech 15 N 2 N 24
 do 7 S 46 N 30
 79.85 Section corner
 West Between Sec. 19 & 30
 10.82 St. Beech. Oak 30 in. diam.
 40.00 g^r. Sec. corner Hickory 10 S 43 E 19
 do 15 N 76 N 19
 43.90 St. M. Oak 30 in. diam.
 82.10 Intersected West Boundary 80 lts North of post
 Beech 6 N 20 N 12
 Hornbeam 5 S 20 N 30
 Level Swamp by hand. Oak. Maple. Birch. Aug. 1st. Hornbeam
 North Between Sec. 19 & 20
 31.64 St. M. Oak 18 in. diam.
 40.00 g^r. Sec. corner Beech 20 N 31 E 33
 do 18 S 33 N 28
 55.10 St. Beech 12 in. diam.
 80.00 Set post corner to Sec. 17, 18, 19, 20
 Beech 8 N 41 N 23
 do 6 N 20 E 19
 Sand Hill 3rd rate. Beech. Oak. Aug. 1st. Spruce. Degwood 1st.
 East Between Sec. 17 & 20 On Random
 40.00 Temporary g^r. Sec. post
 80.11 Intersected East line 1.23 lts South of post
 Sand Hill 3rd rate. Beech. Oak. Poplar 1st.
 Aug. 1st. Degwood. Spruce 1st.

West Corrected Between Sec. 17 & 20
 40.07 g^r. Sec. corner N. Oak 30 East 16
 Beech 15 N 26 N 13
 80.14 Section corner
 West Between Sec. 18 & 19
 21.26 St. Beech 10 in. diam.
 40.00 g^r. Sec. corner Beech 8 N 54 E 6
 do 10 South 19
 52.64 St. Beech 30 in. diam.
 82.28 Intersected West line 82 lts North of post
 N. Oak 15 S 68 E 13
 do 10 S 4 E 8
 Sand Hill 3rd rate. Beech. Oak. Aug. 1st. Spruce. Degwood 1st.
 North Between Sec. 17 & 18
 21.32 St. Beech 12 in. diam.
 40.00 g^r. Sec. corner Beech 12 S 70 E 20
 do 18 N 55 E 19
 50.54 St. Hickory 15 in. diam.
 80.00 Set post corner to Sec. 7, 8, 17, 18
 N. Oak 5th 18
 Beech 30 South 3
 do 8 S 57 N 7
 Sand Hill 3rd rate. Beech. Oak. Aug. 1st. Spruce. Degwood 1st.
 East Between Sec. 8 & 17 On Random
 40.00 Temporary g^r. Sec. post
 80.60 Intersected East line 100 lts South of post
 Rolling 2nd rate. Beech. Oak. Hickory. Aug. 1st. Degwood 1st.
 West Corrected
 40.30 g^r. Sec. corner Hickory 30 N 46 E 15
 Beech 8 S 5 E 18
 80.60 Section corner
 West Between Sec. 7 & 18
 18.80 St. Beech 18 in. diam.
 40.00 g^r. Sec. corner Beech 10 S 67 N 28
 do 24 N 22 E 24
 54.90 St. M. Oak 20 in. diam.

84.00 Intersected West Boundary 1.50 lts North of post
 Beech 12 N 50 N 8
 Maple 15 N 68 E 7
 Sand Hill 3rd rate. Beech. Oak. Hickory. Gum. Aug. 1st. Degwood 1st.
 North Between Sec. 7 & 8
 27.81 St. Beech 20 in. diam.
 40.00 g^r. Sec. corner Beech 20 S 72 N 6
 do 15 S 52 E 32
 64.72 St. M. Oak 16 in. diam.
 80.00 Set post corner to Sec. 5, 6, 7, 8
 Beech 20 S 75 E 11
 do 8 N 10 N 8
 Sand Hill 3rd rate. Beech. Oak. Poplar. Hickory. Aug. 1st. Spruce. Degwood 1st.
 East Between Sec. 5 & 8 On Random
 40.00 Temporary g^r. Sec. post
 80.30 Intersected East line 74 lts South of post
 Hill 3rd rate. Beech. Oak. Gum. Poplar 1st.
 West Corrected
 40.15 g^r. Sec. corner Poplar 10 N 60 N 22
 Beech 4 S 12 N 12
 80.30 Section corner
 West Between Sec. 6 & 7
 21.90 St. M. Oak 16 in. diam.
 40.00 g^r. Sec. corner Beech 15 N 22 E 28
 Gum 36 N 55 N 22
 65.80 St. Beech 12 in. diam.
 84.16 Intersected West Boundary 200 lts North of post
 Gum 18 N 65 E 15
 Beech 15 N 3 N 10
 Hill 3rd rate. Beech. Oak. Poplar. Aug. 1st. Spruce. Degwood 1st.
 North Between Sec. 5 & 6
 20.36 St. Gum 15 in. diam.
 40.00 g^r. Sec. corner Beech 3 N 33 N 12
 do 8 S 58 E 28
 49.96 St. Beech 15 in. diam.

Surveyed by, D. F. Morris D. F.

80.00 Set post corner to Sec. 19, 20, 29, 30

B. Walnut 15 ft 50 E 17

Beach 8 North 3

Sand hill 3rd rate. Beach. Oak. Elm. Angth. Dogwood. Ironwood 8th.

East Between Sec. 19 & 29 On Random

40.00 Temporary gr. Sec. post

79.55 Intersected East line 1.14 lbs South of post

Rolling 2nd rate. Beach. Oak. Poplar. Gum. Sugar. Angth. Spruce. Dogwood 8th.

West Corrected

39.92 gr. Sec. corner Beach 15 ft 2 N 24

do 7 S 46 W 30

79.85 Section corner

West Between Sec. 19 & 30

10.52 St. Oak 30 in. diam.

40.00 gr. Sec. corner Hickory 10 ft 3 E 12

do 15 ft 6 W 19

63.90 St. W. Oak 30 in. diam.

82.10 Intersected West Boundary 80 lbs North of post

Beach 6 ft 20 W 12

Hornbeam 5 ft 20 W 30

Level Run by hand. Oak. Maple. Birch. Angth. Hornbeam

North Between Sec. 19 & 20

31.64 St. W. Oak 18 in. diam.

40.00 gr. Sec. corner Beach 20 ft 31 E 33

do 18 ft 33 W 28

55.00 St. Beach 12 in. diam.

80.00 Set post corner to Sec. 17, 18, 19, 20

Beach 8 ft 11 W 23

do 6 ft 20 E 19

Sand Hill 3rd rate. Beach. Oak. Angth. Dogwood. Ironwood 1st.

East Between Sec. 17 & 20 On Random

40.00 Temporary gr. Sec. post

80.14 Intersected East line 1.23 lbs South of post

Sand Hill 3rd rate. Beach. Oak. Poplar 8th.Angth. Dogwood. Spruce 8th.

West Corrected Between Sec. 17 & 20

40.07 gr. Sec. corner W. Oak 30 East 16

Beach 15 ft 26 W 13

80.14 Section corner

West Between Sec. 18 & 19

21.26 St. Beach 10 in. diam.

40.00 gr. Sec. corner Beach 8 ft 54 E 6

do 10 South 19

52.44 St. Beach 30 in. diam.

82.28 Intersected West line 82 lbs North of post

W. Oak 15 ft 68 E 13

do 10 ft 4 E 8

Sand Hill 3rd rate. Beach. Oak. Angth. Dogwood 8th.

North Between Sec. 17 & 18

21.32 St. Beach 12 in. diam.

40.00 gr. Sec. corner Beach 12 ft 90 E 20

do 18 ft 35 E 19

60.54 St. Hickory 15 in. diam.

80.00 Set post corner to Sec. 7, 8, 17, 18

St. 8th 18 ft 30 South 3

do 8 ft 5 W 7

Sand Hill 3rd rate. Beach. Oak. Gum. Dogwood 8th.

East Between Sec. 8 & 17 On Random

40.00 Temporary gr. Sec. post

80.60 Intersected East line 100 lbs South of post

Rolling 2nd rate. Beach. Oak. Hickory. Angth. Dogwood 8th.

West Corrected

40.30 gr. Sec. corner Hickory 30 ft 6 E 15

Beach 8 ft 5 E 18

80.60 Section corner

West Between Sec. 7 & 18

18.80 St. Beach 18 in. diam.

40.00 gr. Sec. corner Beach 10 ft 17 W 28

do 24 ft 22 E 24

54.90 St. W. Oak 20 in. diam.

84.00 Intersected West Boundary 1.50 lbs North of post

Beach 12 ft 80 W 8

Maple 15 ft 68 E 7

Sand Hill 3rd rate. Beach. Oak. Hickory. Gum. Angth. Dogwood

North Between Sec. 7 & 8

24.81 St. Beach 20 in. diam.

40.00 gr. Sec. corner Beach 20 ft 2 W 6

do 15 ft 52 E 32

64.72 St. W. Oak 16 in. diam.

80.00 Set post corner to Sec. 5, 6, 7, 8

Beach 20 ft 5 E 11

do 8 ft 10 W 8

Sand dune. Beach. Oak. Poplar. St. 10 ft 20 W 19

East Between Sec. 5 & 8 On Random

40.00 Temporary gr. Sec. post

80.30 Intersected East line 74 lbs South of post

Hilly 3rd rate. Beach. Oak. Gum. Poplar 8th.

West Corrected

40.15 gr. Sec. corner Poplar 10 ft 60 W 22

Beach 4 ft 12 W 12

80.30 Section corner

West Between Sec. 6 & 7

24.90 St. W. Oak 16 in. diam.

40.00 gr. Sec. corner Beach 15 ft 22 E 28

Gum 36 ft 85 W 22

65.80 St. Beach 12 in. diam.

84.16 Intersected West Boundary 200 lbs North of post

Gum 18 ft 65 E 15

Beach 15 ft 3 W 10

Hilly 3rd rate. Beach. Oak. Poplar. Angth. Dogwood

North Between Sec. 5 & 6

20.35 St. Gum 15 in. diam.

40.00 gr. Sec. corner Beach 3 ft 33 W 12

do 8 ft 58 E 28

49.96 St. Beach 15 in. diam.

80.00 Intersected North Boundary 1.46 lbs East of post

W. Oak 15 ft 12 W 18

do 10 ft 12 E 8

Sand Hill 3rd rate. Beach. Oak. Hickory. Gum 8th.Angth. Dogwood Sept 9th 1819

Surveyed by R. F. Morris D. S.